

ORDER BOARD

Official Newsletter of *The Calgary Model Railway Society*

In This Issue

- **President's Report**
- **Appreciation Night**
- **Railway Days 98**
- **Trainmaster Award**
- **Why Not Minot?**
- **Train Hopping**
- **Prototype Oddball**
- **Upcoming Events**
- **Board of Directors**
-

The
Communication Medium
For Railway Enthusiasts

Volume 6 Issue #3
May 1998

President's Message

Another record setting SUPERTRAIN has come and gone. I will take this space to thank so many of our members who worked so hard to make it such a large success. Mr. Al Pierce, show chairman, and all of his committee members deserve a big Thank You. As well, a big thank you, to all those many other members who put many hours of their own time into the making of this show. Thank you also to all of the exhibitors both private and commercial, who had a hand in making this the most well attended SPERTRAIN ever.

The modelling year is starting to slow down, with signs of life emerging from the basements and doing things like raking the yard and taking down the Christmas lights. These are sure signs that Appreciation Night cannot be far off. Please join us for a fun evening where we honour those who spend many hours of their own free time contributing to our hobby in unseen and unnoticed ways.

See you there.

Member Appreciation Night May 20, 1998

Place Highlander Motor Hotel - Glengary Room Time 7:30 P.M. - 9:30 P.M.

Cash Bar and a selection of light snacks will be available

RSVP - By MAY 16/98 to

Marshall Oulette 289-4430

HERITAGE PARK Historical Village

RAILWAY DAYS ARE HERE AGAIN

Or very soon will be

The announcements have gone out to the North American "railfan" press. Something along the lines of the following should be appearing in a magazine near you shortly.

Heritage Park Railway Days Calgary, Alberta Canada

The entire weekend of June 13/14, 1998, will be devoted to honouring the known and unsung heroes of the railway. Continuous live steam action with two matching 1940's era 0-6-0's on passenger and freight train duty, operating street cars, in this historic town context. Interpretive demonstrations, telegraph operation, preserved buildings and equipment, working turntable, all bound together by "Roundhouse Theatre." Displays of scale models, railway clocks, watches, paper, and speeders will be on hand. Authentic replica Calgary street cars convey you between parking areas and main entrance. **Railway Days 1998 welcomes you!**

Now, all of the CMRS membership must be aware of this event, this is the 12th year. Each time it seems to grow just a bit. This year, following the enthusiastic popular response in 1997, the live interpretive program will develop a little further. Pushing the envelope would be the current cliché. The practice of running a four car passenger train all day satisfied a visitor's need for rides continuously available.

Lightning has indeed struck twice, in that a second proposal of marriage has been delivered through the medium of traditional telegraph, and this in the age of the internet!

RAILWAY DAYS offers just that one special weekend in the year when all the rail equipment and infrastructure at Heritage Park gets pressed into some sort of service. It further presents us, in the allied hobbies, a unique opportunity to acknowledge our appreciation for the very existence of The Park's collection, not to mention the incredible context within which it operates.

Extra Help is needed. If you are willing to devote half a day, one day or two days to the event, the Committee would be delighted to hear from you. Please contact the Railway Days Volunteer Co-Ordinator,

Don Marchant, (Himself a Volunteer)
Heritage Park Historical Village
Phone (403) 259-1900 or Fax (403) 252-3528
See You at RAILWAY DAYS 98



Trainmaster of the Year Award

Purpose - To recognize a group or individual's outstanding contribution to the model railroading community, in the City of Calgary over a period of time.

Method of Selection - The Society will establish a panel of its members to evaluate all nominees, and select the member or members to be honoured. All nominees and nominators must be members of the Calgary Model Railway Society. This award will be presented at the annual Volunteer Appreciation Night. Nomination forms will be included in the official newsletter of the society.

If you have an individual or group you would like to nominate, please contact Tom Parker at 241-5409, by **MAY 16, 1998**. Please leave a message on the machine if there is no answer. The award will be presented at the annual Appreciation Night on May 20/98.

The DISPATCHER

Authorized Dealer



Digitrax Digital Command Control
Soundtraxx Digital Sound
Atlas and Kato Locomotives

Southern Alberta's source for all your D.C.C. Needs
Excellent Service Prompt Delivery, Knowledgeable
Custom Installation Available
Discount Prices

Barry Conn

213 Oakchurch Bay S.W. Calgary Alta.
T2V-4B6 (403) 251-9334



BUY-SELL-TRADE MODEL R.R. EQUIPMENT
"N" SCALE SPECIALISTS

Marshall Ouellet
Ph. (403) 289-4430

Don Chehowy
Ph. (403) 249-2877



TRAINMASTER HOBBY SUPPLIES

An Agent For Big Little Railroad Shop
Tom & Joanne Parker
403-241-5409 Fax 241-5407
Calgary Alta.

Why Not Minot? *the Magic City* in '98



Join us for the 1998 PNR - 6th Division Spring Meet
in conjunction with the TLR Convention

M* Three Full Days! - May 15, 16 & 17, 1998

Plan to come on Thursday, so that you will be able to take in a full day on Friday.
Convention Headquarters - Best Western - International Inn, Minot, North Dakota
1-800-735-4493 (we have blocked 120 rooms for Thursday, Friday, Saturday &
Sunday nights, at \$48.00 for one to four persons, double and twin doubles
-- no extra for Pool Side rooms.)

All Correspondence to:
NMRA-TLR Convention
Magic Minot in '98
c/o Rich Meyer
PO Box 1178
Minot, ND 58702
e-mail: champ@minot.com

M* Non-Rail Events for the Ladies

M* Outdoor Grilled Steak Dinner on Friday Evening at the
home of Rich & Connie Meyer (Extra Fare)

M* Ride the Magic City Express in Roosevelt Park, behind
a 2/5th size of Great Northern's 1177, F-8 Consolidation (3 day pass for all those paying full
registration) -- Visit the largest zoo between Minneapolis and the West Coast while at the park.

M* Visit the Souris Valley Model RR Club Layout (HO & N),
Don Tank's HO layout, and possibly 3 other HO layouts. (Friday and Sunday PM)

M* Tour Champion Decal Co., via live Clinic and Video, and
see how Connie & Rich actually print their decals.

M* Visit Gavin Yard & Gassman Coulee, A limited number of registrants
will be able to visit the top two levels of the Hump Tower at Gavin Yard.
(Friday & Sunday after noon)

**M* Visit the Great Northern Railway - Big Sky and
Rocky Divisions.** This 2,500 sq. ft. O Scale layout is owned & operated by Rich Meyer.
Some of the "sights" include: 15 Custom Built O Scale G.N. Steam Locomotives, 150 scale feet high
Two Medicine Trestle, 16-1/2 foot long Gassman Coulee Trestle, 24 stall roundhouse, 40 car freight
train that passes over itself so the conductor can wave at the engineer, and a spectacular night
scene. You will also see the "most scratchbuilt structures - EVER", done by TLR member
Moe Smith from Winnipeg: the six foot long curved wooden trestle, with 2,700 "nut and washer"
Grandt Line castings drilled and installed, made from a single 2x6 inch by 6 foot long piece of
basswood, all cut by Moe to scale sized lumber. Other structures by Moe are also here.

There is much more to see, too much to describe here. Come and see for yourself.

(Friday & Sunday PM)



Hope to See You!!

MINOT
NORTH DAKOTA
Discover the Magic!

Train Hopping Not the Way to do it

In the summer of 1984, a friend and I were returning from a Railfanning trip to Syracuse New York. While crossing the straight, flat, 'see forever' plains of North Dakota and Montana, we caught up to a W/B BN freight. It was in the hole waiting for the E/B Amtrak so we stopped to snap some photos. The temperature that day had finally dropped to a "comfortable" 95 F, and not a cloud in the sky.

The W/B freight was a hotshot of autoracks and container flats, no shade. As the train began pulling out past the gravel crossing we were at, we noticed three young people riding one of the skeleton flats. They apparently thought we were railroad police as they appeared to be prepared to jump off and take their punishment. All three looked as if they had been sitting in the direct sunshine for a number of hours. They were obviously hot and getting burned. We could not see any sort of water container amongst their meager possessions.

The three riders were on their way to the Glacier Park area to seek summer employment. They apparently had not thought out what type of train to get on, as this one offered no protection whatsoever from the elements. They hadn't even chosen a good car type to ride as the skeleton flat offered only minimal seating and hand holds.

These kids (17 to 19 yrs) were going to make it to the next town, luckily. Now I am not advocating riding the rails as there are numerous perils to meet on the high line. However, as in all things one does, some form of planning or knowledge should be attained before venturing out on any road.

Oh and by the way, my friend and I had been travelling for about 10 days at this point. We had one can of an Eastern Brew remaining in an iced cooler in the trunk. We passed them this single can as they went by, to share amongst them. We continued chasing the train for about 10 miles across Montana and we could hear them screaming "Thank You" all the way. I guess they were thirsty.

Care to have your Photos Published?

Do you have any photos of the railways of Calgary, past or present? New CMRS member Kevin Franchuk is looking for pictures to use in a series of upcoming B.R.M.N.A. books on the subject. Especially needed are photographs of Diesel subjects, in a recognizable Calgary setting (i.e. A CP Train rolling past Ogden Shops.) Modern diesels are also welcome.

Please call Kevin at 287-0810 (please leave a message if not at home.) The books will be along the lines of the successful Canadian Pacific in the Rockies and other series.

For the latest update on events call the CMRS HOTLINE 278-6394

Pacific Western Rail Systems

Canadian Address: 16015 - 10 Ave., Surrey, B.C. Canada V4A-2J4
American Address: p/o Box 8110-368 - 250 'H' Street
Blaine, Washington 98230

Tel: (604) 531-9481 Fax: (604) 535-7691

E-Mail info@pwrs.pwcom.com

Web Site www.pwrs.pwcom.com

Offering 6 pack, Special Run, sets of Canadian Grain Cars.

ULTIMATE TRAINS



"G" Gauge

Indoor Outdoor Model Railway and Buildings

Tony(Anton)Schewiller

Joan Schewiller

Phone: (403) 590-5276

Fax: (403) 280-5574

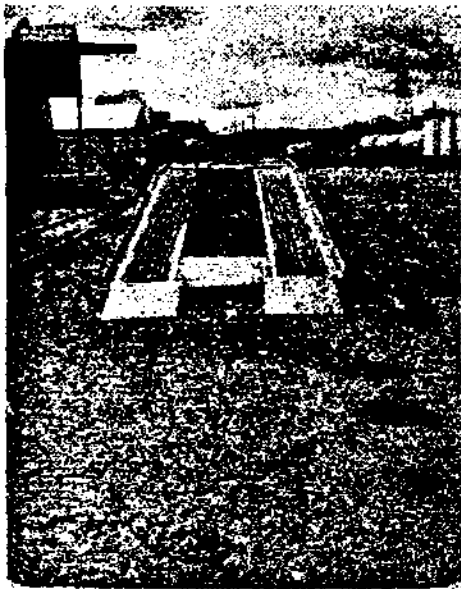
Authorized Retailer & Distributor
in Alberta, Yukon, Sask. & NWT



Eventually Every Town Receives a Trailer

How is this for an excuse to put in ONE more piece of track in your small town. This is basically a highway truck trailer, bent in the middle, with the bogey wheels still attached.

The wheels are appropriately blocked to the right height to off load a trailer from a trailer train flat.



Add a tread, the correct width to supply traction for your truck and you have a loading ramp.

This unit was photographed in Kirkland Lake Ontario, in 1979. It was in occasional use by the Ontario Northland Railway. It is not known, by this writer, if the unit is still in use today, however, these photos prove a prototype existed so why not in your small town.

Photos and text by
Willie G. Smith
Copyright 1998 WgSm

If you have anything, articles or photos, you think may be of interest to the Calgary Modelling Community, please contact

Willie Smith

Res. 247-4620

(Leave a message in case I am working)

Fax 247-9946 (24 hours)



TIMBERLINE

SCALE MODEL TREES

"Handcrafted"



343 Whitney Crescent S.E.
Calgary, Alberta, Canada
T2J 1G1

Tim Watkins
Marketing Representative
Phone 1-403-225-4119
Fax 1-403-225-4119

BOARD of DIRECTORS - Positions and Responsibilities

Phone Numbers H - Home B - Business F - Fax

Tom Parker - President
H-547-1201

Marshall Ouellet - Vice President
H-289-4430

Harry Sims - Sec./Tres.
(Pending Acceptance)

Bob Ellisen - Membership

George Simpson - Special Events

Rick McPhee - Special Events
H- 289-7770

Don McLeod - Special Events

Tim Watkins - Publicity/Orderboard
H- 236-3359

*Individual Directors have separate responsibilities.
Please contact the appropriate Director for
information on the Area you want to know about.*

For Commercial Advertisers, please contact the
Publicity/Orderboard Director for rates and approval
prior to submitting Ads to the Editor.

CMRS HOTLINE (278-6394)

Have you forgotten what the latest CMRS events are, their location or time?? Then call the **CMRS HOTLINE**.

We have established a phone line where the members can call in and get a recorded message with the latest breaking information on CMRS activities and events. You can also leave messages on the answering machine if you would like a call back.

Upcoming Events

Modellers Day with the Pros (Clinic)

Sept. 12, 1998

**Bob C. Bickley Vice President, Sales & Marketing
Inter Mountain Railway Company, Denver Colorado**

**Don Read MMR & Kit Designer & Manufacturer, Denver Colorado
Clinic location to be announced**

Classified Advertising

Do you have some model railroad related items you would like to sell. If so, consider putting an ad in the Order Board. Ads will be free for members (assuming they are small and don't take more than a few inches of space).

Commercial ads (business card size) are also accepted for a fee of \$10.00
A good selection of Computer Clip Art (Railroad Related) is available to spice up your Ad.