

ORDER BOARD

Official Newsletter of *The Calgary Model Railway Society*

In This Issue

- **President's Report**
- **Trains For Kids**
- **Modeling With Pros**
- **Layout Tours**
- **Mini Meet Report**
- **By-Law Review**
- **Slide Night Report**
- **CMRS On The Web**
- **Supertrain '99'**
- **For The Modeller**
- **Upcoming Events**
- **Board of Directors**

The
Communication Medium
For Railway Enthusiasts

December 1998

Editor **Wille G. Smith**
E-Mail wille.smith@home.com

Message from the President

Hi Everyone;

A motion at our annual general meeting was that a committee should be initiated to review the Society's by-laws. I personally believe that our society's by-laws are a living document, which should be reviewed on a periodical basis, to make sure that it represents the society and its goals. I would like to announce our by-law committee: Bill Cameron, Barry Conn, Byron Ellett, Richard Johnson (chairperson), Dave Stefanek and Tim Watkins. I encourage everyone to give the committee any input that you may have with regard to the by-laws. See inside this newsletter for further information. Good luck gentlemen!

Thanks are in order for another successful and well attended Mini Meet. Hats off to Maurice Despins and his group of volunteers. Also, thanks to Al Love and his presenters for a great slide night. Both events have grown in size and response. Please see the articles inside.

This year's annual SUPERTRAIN is coming along. We have a new and larger venue, which will be still held on the Family Day weekend in February. An increase in space will allow you to see more layouts and exhibits, while keeping commercial space to approximately 15% of the total space. This has been the normal ratio in previous years.

In trying to keep up with progress, the society would like to offer anyone who wants to receive their ORDERBOARD and other society announcements by e-mail instead of by Canada Post, to please contact Barry Conn by e-mail. His e-mail address is in the Board members listing. Notice that our Web site is better then ever. Check it out!

My second last point before I sign off was brought to my attention recently. The society is here to promote the hobby and to encourage new members to join. We are a volunteer organization. An individual inquired if they could use our membership list for commercial use. The Calgary Model Railway Society (CMRS) membership list is not for commercial use. Instead, if a member wants to sell commercially or in private, I encourage an ad in the ORDERBOARD.

Finally, the board would like to wish every member a safe and enjoyable season's greeting. We also wish you, your family, and friends all the best in the new year.

Okay enough,

MARSHALL

Calgary Model Railway Society **Trains for Kids For Christmas**

Last year, for the first time, C.M.R.S. took on a project of attempting to supply the United Way with as many New Train Sets, as possible, for distribution to children for Christmas. Along with a few corporate sponsors and the membership of our organization, we raised enough money to pay for 35 train sets for young boys aged 12 to 15. We are again asking for your help to raise funds for this most needed project. If you would like to contribute or know of a possible contact that might like to be involved with this project, please contact Tom Parker at 547-1201 after 7 P.M. and be part of making a young man's Christmas morning very special, as it was for us when we received our first train. Thank you to those of you who have already contributed at the Mini Meet or at Slide Night.

Tom Parker - E-Mail - trainmasterhobby@home.com

Modelers Day with The Pros

Saturday Sept. 16/98 was advertised as Modeler's Day with The Pros, another event hosted by CMRS. Upon entry I picked up three different colors of Model Flex paint, supplied by Badger (Canadian colors too), And some Badger advertising, and then proceeded to enjoy the day. Outgoing CMRS President Tom Parker had some remarks particularly about the annual Trains For Kids for Christmas program, where CMRS, members donate money allowing the purchase of train sets at cost, and outright donations from suppliers. Last year we came through with 28 sets for kids, from 11 - 14 years who in some case did not have any other Christmas gifts.

Mr. John Lee from American Model Builders (also representing Badger), led clinic #1 on painting. He discussed their 170 different colors (with more coming), what plastics will and will not be attacked by Badger Paints, how to properly clean spray equipment, and gave us a phone number for Badger Parts (1-800-4Wyn-Wyn). John next led the discussion about the American Model Builders laser cut kits, complete with a slide presentation on kit manufacture with the latest in laser technology to our hobby. A grain elevator kit was presented as a door prize. John needs more ideas for Canadian Kits, please call him with ideas photos plans, anything. John also gave away a Badger 155-7 Anthem Air Brush system to end the presentation.

Mr. Bob Bickley, VP Sales and Marketing for Intermountain Railway Company started his presentation with several door prizes of kits and assembled kits. He spoke of modeling tips for their kits and an update on product development in their new 7000 Sq ft addition to their facilities. He also spoke of the proper use of modeling tools and adhesives, then more door prizes. He then updated us on upcoming products: (HO Scale 60' laser cut wood deck flat), 9 new F-Units covering all phases, (O Scale 8000 gal Type 27 tank car), (N Scale 60' wood flat). The F-Units are in HO and N Scale. After lunch there was a discussion on tools such as diamond files and liquid glue (a new plastic welding system). Bob passed around sprues from a refrigerator car kit, lots for everybody to take home.

John next came back with a laser kit building session. He had enough kits for everyone to assemble and take home. Kit #799, the False Front Office, is a kit prepared for gatherings such as this. Elmers glue was supplied as well as tools provided by Xacto. I am amazed to see just how fine the windows had been made using the laser.

As for next year, CMRS will decide if the idea was worthwhile since more representatives have expressed a keen interest in coming to Calgary to present a similar kind of day. Modelers such as George Selios (Fine Scale Models) have already said they want to come to Calgary.

Dale Sproule

Pacific Western Rail Systems

Canadian Address: 16015 - 10 Ave., Surrey, B.C. Canada V4A-2J4

American Address: p/o Box 8110-368 - 250 'H' Street
Blaine, Washington 98230

Tel: (604) 531-9481 Fax: (604) 535-7691

E-Mail info@pwrs.pwcom.com

Web Site <http://www.pwrs.pwcom.com>

offering 6 pack, Special Run, sets of Canadian Grain Cars.

CMRS HOME LAYOUT TOURS

We would like to continue this event this coming season. However, as previously mentioned in the last Order Board, there is a change to the time frame to make it more convenient for everyone. This event will take place during the months of March and April 1999. You, as a host, will choose the time and date that suits your schedule to host a tour in your home. Now is the time to show off all those changes you have been making to your layout. You don't have to have a fully finished layout, as layouts in all stages of development are welcome. Don't forget that there are all sorts of people that would like to learn how to build a layout. They can't learn the basics if everything is hidden in fully finished scenery. Any club or group wishing to host a tour is also welcomed. If you are interested or know of anyone interested in opening their home/club for a layout tour, please contact me ASAP as time is running short. With Christmas and the train show just around the corner, I would like to get this coordinated and all the information distributed in the next Order Board. This is one of the Society's favorite events and for those of you who missed out last year, be sure that you partake in this year's activity. Stay tuned for more info.

Maurice Despins, Coordinator for 1998/99 Home Layout Tours
Ph. 281-5916 (you have 30 seconds to leave a message on the answering machine)

MINI MEET 1998

I would like to extend a warm thank you to all the clinicians, volunteers, commercial displays and TNG who supported me in making 1998 Mini Meet a success. Approximately 200 people took in this workshop event, and it sounds as though everyone enjoyed themselves. Once again the Bring and Brag proved to be a popular segment of the mini meet. Events like this can only take place and be successful with the enthusiasm and participation of the members. So with this thought, I would like to paraphrase J. F. Kennedy. Ask not what CMRS can do for you, but what you can do for CMRS. We need your participation for events like this to continue. The 1999 Mini Meet date is set and we need someone to come forth and coordinate this event. I will be more than happy to assist next years coordinator. Although previous organizers have set the base, all you have to do is take the information and guideline and run with it. CMRS is a dynamic group with many individuals willing to share their knowledge. I am proud to be associated with people like you. Thank you for your participation in making the 1998 Mini Meet a success.

Mini Meet Coordinator, Maurice Despins

**ULTIMATE
TRAINS**



G Gauge

Indoor Outdoor Model Railway and Buildings

Tony(Anton)Scheiwiller
Joan Scheiwiller
Phone: (403) 590-5276
Fax: (403) 280-5574

Authorized Retailer & Distributor
in Alberta, Yukon, Sask. & NWT



TRAINMASTER HOBBY SUPPLIES

Tom & Joanne Parker

Mailing Address

Phone 403-241-5409

Suite 634

Fax 403-241-5407

#105-150 Crowfoot Cr. NW

Calgary Alta. T3G-3T2

E-mail: trainmasterhobby@home.com

By-Law Review Committee Requests Input

As the result of a motion passed at the annual general meeting of the society in September, 1998, a committee has been set up to solicit input from members of the society with respect to the organisational structure of the society and to review the society's by-laws in the light of that input.

The committee will also be examining the by-laws to try to clarify any ambiguities and to eliminate any inconsistencies or misinterpretations which may be perceived in the by-laws as they now stand.

Committee contacts are as follows:

Name	Phone	e-mail
Bill Cameron	294-3008 (W)	wcameron@efasoftware.ab.ca
Barry Conn	251-9334 (H)	barry.conn@home.com
Byron Ellett	251-4027 (H)	
Dave Stefanek	279-4886 (H)	
Tim Watkins	236-3359 (H)	
Richard Johnson (chair)	288-1789 (H)	rjohnson@ucalgary.ca

All members of the society, both independent members and clubs, are invited to forward their comments or concerns to the committee as soon as possible but no later than January 15, 1999. Written comments or e-mail notes are preferred. If clubs wish to discuss this matter with the committee, please contact Richard Johnson and we will arrange a suitable time.



Report on Slide Night '98

Slide Night, and now Slide/Pizza Night, has become a mainstay in the CMRS's offering of events. In our first year of operation it was the initial function that brought us together at the scout hall below the Children's Hospital. Each November since, a variety of slide presentations have been offered by local and "imported" presenters. These presentations have provided knowledge, inspiration and entertainment value for railfans and modellers alike. The last two slide nights have been held in the theatre of Bowness High School with its padded amphitheatre seating and large screen, and from comments to the organizers we hope that this will become our facility well into the future. Al Hough has secured the theatre the last two years and deserves our thanks for making Slide/Pizza Night a success.

This years presenters, Bob Sandusky and Gord Smith, provided two hours of fantastic photographs of their overseas railfan excursions. Bob's images of South African steam taken in 1996 and 1997 and Gord's photographic record of his Feb/March 1998 Cuban steam operating around the island's sugarcane plants provided the audience of 67 people with spectacular scenery and informative commentary on the romance of steam power in different parts of the world.

For those of you who missed out make a point of checking the calendar of events for 1999 and put a circle around Slide Night. Thanks to Tom Parker for arranging free pop from Pepsi and for taking donations to the "Trains for Kids" trainset fundraiser. For free pizza, pop and great slides why not join us next November.

Al Love - Slide Night Coordinator

CMRS and ORDER BOARD ON THE WEB

Beginning with the next issue, we would like to have as many members as possible read their edition of the Order Board from our WEB pages. The costs involved in sending out copies (copying, envelopes, stamps) and the time involved in folding, envelope stuffing and stamp licking are becoming prohibitive for such a large number of members. We plan to set up an email distribution list and periodically let you know when new information has been published on the WEB site.

The CMRS WEB SITE address is: <http://members.home.net/acocker/cmrs.html>

This site will be continually updated with the latest breaking information on CMRS events. PLEASE HELP US OUT. Send me a note with your email address and indicate that you are able to access and read the CMRS WEB SITE. Send your note to: barry.conn@home.com
For those members who do not have web access we will continue to send copies by mail.

I would like to thank Andrew Cocker for developing and hosting the CMRS web site, and Willie Smith for designing, developing, hosting, and being Editor of the Order Board. When you visit the sites, please drop these gentlemen a note and let them know how much you appreciate their efforts.

Barry Conn
Publicity/Order Board Director
More about the **Order Board** on the Web on Page 5



More New Things to Do

WEB site of the month: <http://www.spikesys.com> lots of interesting train sound files, information on signals, railroad definitions, historical information, etc.

Joke

[About the 'Ghan train, a somewhat famous train running to Alice Springs, and having quite a reputation for slow service due to very bad track - 20 mph max. for 800 miles!] Worried and very pregnant woman catches the attention of the conductor on the 'Ghan one fine day:

"Mr. conductor, I am very worried that if we do not get to Alice Springs on time, I just might be into labor right here on the train."

"Madam, you should have thought about that when you boarded, being that you are in this condition."

"But sir, when I boarded this train, I wasn't in this condition!"



The DISPATCHER
Authorized Dealer
Digitax: Digital Command Control
Soundtraxx Digital Sound
Atlas and Kato Locomotives, Roco DCC Products
Barry Conn
213 Oakchurch Bay S.W
Calgary Alta. T2V-4B6
(403) 251-9334

Southern Alberta's source for all your D.C.C. Needs
Excellent Service Prompt Delivery, Knowledgeable
Custom Installation Available
Discount Prices

Internet
<http://members.home.net/dispatcher>
E-Mail dispatcher@home.com



Message from the Publicity Director On the Web

Beginning with the last issue of **The Order Board**, we have begun to include an **Events Schedule** page. This page will be your source of information regarding upcoming Events and locations. It is intended to be a look ahead to the next 12 months, and should facilitate your planning for attendance at events. However, with the Order Board being published bi-monthly, there may be some event information which will change prior to the next publication.

The Order Board staff and the CMRS have now instituted an **Order Board on the Web**. Now you can read the Order Board at your convenience, on your computer, and obtain the MOST up to date information on events, new articles, articles from previous issues and modelling tips. Furthermore, a number of Directors of the CMRS also have E-Mail addresses published in the Web Order Board, and you will be able to contact them directly with comments or questions.

You can access the Web Order Board from the CMRS Web Pages, hosted by Andrew Cocker at
<http://members.home.net/acocker/cmrs.html>

OR

<http://members.home.net/willie.smith/order.html>

Beginning with this issue, we are also instituting a **Letters to the Editor** service, on the web. At the time of publication we do not yet have a Postal Box available to mail in letters. However, for those of you with E-Mail access, we will accept Letters to the Editor at the following two E-Mail addresses:

Barry Conn – barry.conn@home.com - Publicity/Order Board Director
Willie Smith - willie.smith@home.com - Editor of the Order Board

We will publish all letters on the Web, providing there is No Vulgarity, No Personal Attacks, and the letter writer's intent is to further the goals of the Society (i.e. assist the modelling community in Calgary). Please send us your comments on the new WEB pages, suggestions on activities for CMRS, etc.

One other New Feature, on the Web, is '**For The Modeller**'. There are currently 5 articles on the Web Order Board under 'For The Modeller'. Three are Mini Projects and two are Engine drawings and coloured examples of paint schemes. I wish to expand on this source of interesting "How To" articles, and invite you to send me short articles on a Tip or Mini Project you may have completed. You may send accompanying photos or drawings with the article. Submissions may be sent via E-Mail to willie.smith@home.com, Faxed to 247-9946, or phone 247-4620 to arrange pickup or delivery.

One more thing, if you access the Web Order Board. Please sign the **Guestbook**. There is a Menu choice on the Main Index page. Simply Add your information and comments for all to read.

Director Publicity/Order Board

Barry Conn

251-9334

barry.conn@home.com

Editor Order Board

Willie Smith

Fax 247-9946

willie.smith@home.com

"SUPERTRAIN '99" UPDATE #2

COMMITTEE: Your "SUPERTRAIN '99" committee this year is:

Supertrain '99 Committee -	Allan Peirce - Chair
Admission & Financial -	Maurice Despins - Chair
Concession & Guest Relations -	Alan Pile - Chair Elmer Holm
Facilities & Operations -	Glen Judd - Chair Barry Conn Selwyn Morris
Marketing & Promotions -	Byron Ellett - Chair Russ Pinchbeck

LOCATION & DATE: "SUPERTRAIN '99" will be held in the lower level of the Big 4 Building at Stampede Park on Saturday and Sunday, **February 13 & 14** which is the "family day" long weekend again this year. The doors open to the public at 0900 hrs and will close at 1700 hrs both days. Mark it on your calendar! Show setup will be on Friday, February 12.

"HOW TO" BOOTH: This year we plan to have a "HOW TO" booth at SUPERTRAIN. The thought here is to have two or three modellers in a centrally located booth demonstrating *how to* assemble simple model railroad kits, both buildings and rolling stock. This proposal originated from comments in previous years that showed that many of our guests were reluctant to start in the hobby because they thought equipment assembly was too difficult for them!

EXHIBITS: We have a lot more exhibitor floor space available this year and are actively seeking more model railroad exhibits. If you would have been sitting on the sidelines the last few years and would like to have an exhibit at the show, please contact either Glen Judd (252-4367) or Barry Conn (251-9334). Exhibitor applications are beginning to come in. Several commercial and several non-commercial have already been received and it looks like we will have exhibits from Calgary and Edmonton confirmed with the possibility of some from Saskatoon, Lethbridge, Salmon Arm and other places even further away.

VOLUNTEERS REQUIRED: In the past we have been able to obtain volunteers to assist in the operation of SUPERTRAIN from the one or two clubs who have "sat out" on a given year because of the limited floor space at Mewata Armouries. This year we expect almost all the model railroad clubs that are affiliated with CMRS will have an exhibit which means our source of volunteers has been seriously depleted. With a bigger and better show our requirement for volunteers expands accordingly. We are hereby requesting that any CMRS member who would like volunteer to assist in SUPERTRAIN '99 contact either of the following:

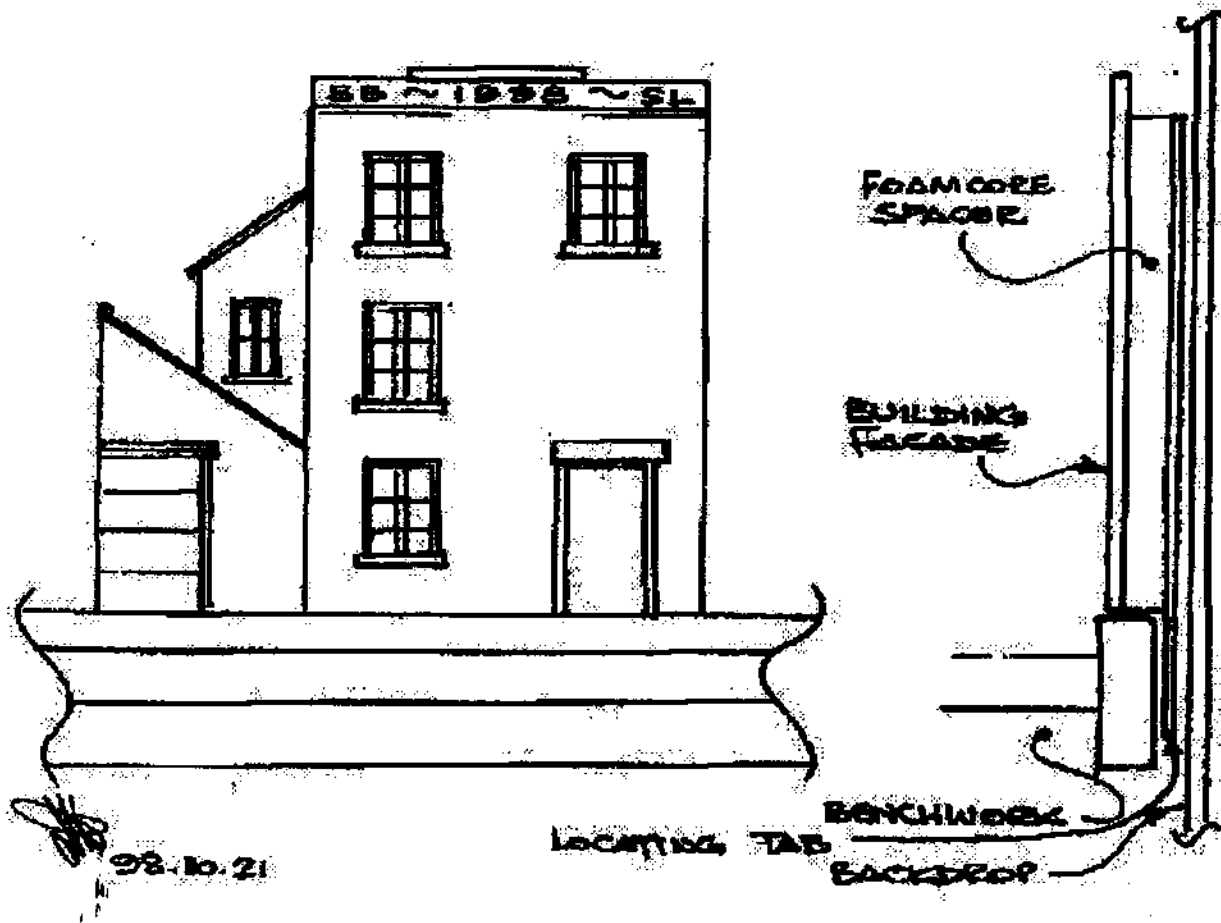
Door personnel: Selling and taking tickets - Maurice Despins 281-5916

"HOW TO" Booth: Demonstrate kit assembly - Alan Pile 285-2953

Undecided: Would like to help in some way. - Allan Peirce 278-6786

Allan Peirce - Chairman "SUPERTRAIN '99"

For The Modeller - The Scrap Bin



The Scrap Bin

A simple and effective way of producing low relief scenery against a backdrop has been put into use on the Parkland Division, SBSL. Some of you may have noticed a short trial section when attending 'Varnish Night' On Oct 10, 98.

The idea is to have buildings that don't take up much space, but stand off from the flat backdrop. These low relief buildings, and the principle can be extended to hills, rocks or anything, are made up in small 4 to 6 inch, slot-in modules. These can easily be re arranged to make a different skyline or urban landscape.

To make all this work, you need to leave a small, narrow gap at the back of the layout board, where it meets the wall. Into this, the locating tab on the bottom of the scenic module simple drops to hold the piece firmly in place.

The frontage can be made up of building kits, leftover parts, broken buildings, or indeed a combination of all three. I happened to find a bag of damaged and incomplete architectural model kits in a hobby store somewhere at a suitably attractive price. Now I need to look for more, as you can quickly work your way through a pile of pieces. Somehow this year's Boomer Auction didn't produce the customary bunch of recycleable junk buildings.

Making up these flats or modules is really simple stuff. Select the pieces of buildings you want as the frontage, prepaint and arrange them in order. Next cut a piece of foamcore to use as a filler and give depth. In fact a neat trick is to use foamcore of differing thicknesses to vary the set back, or set forward of your street line. Cut it a little smaller than your frontage, then spray flat black on the face and edges. This way you effectively darken window openings, and the edges can be brick or stone coloured to match the frontage. Using a piece of stout card, styrene sheet, or in the Parkland case, scrap wood panelling, as a backing, glue the rest of the assembly to it. This backing piece will also include the tag dropping down to secure the module in place.

And this really is all there is to it. After making up a bunch of these modules, I take most of them and give them a weathering spray over. That, plus the dust, helps to give the layout that 'Lived In' look.

Calgary Model Railway Society

Model Railroad Events Schedule

keep watching this space for schedule additions/changes)

December CMRS Trains for Kids (raising funds to buy train sets for needy children)
Coordinator: Tom Parker phone 547-1201

1999

February 13, 14 CMRS SUPERTRAIN '99
Big Four Bldg. Stampede Grounds 9:00 am- 5:00pm
Coordinator: Allan Peirce phone: 278-6786

March/April CMRS Layout Tours
Coordinator: Maurice Despins phone 281-5916

March 20 Flea Market - by Calgary Model Trainmen 1101-2 St NW
Contact Doug Baker at 282-6789

April TBD CMRS Member Appreciation Night
location: TBD Coordinator:: Bob Ellison 279-4563

June TBD CMRS Summer Barbecue

August TBD Rocky Mountain Garden Railway-- Hoot and Toot

September 13 CMRS Annual Meeting

October 2 Mini Meet

November 10 Slide Night

Memberships are available in Calgary Model Railway Society (annual fee is \$5.00)

Call Rick McPhee (Membership Director) 289-7770

General questions?? Call Barry Conn (Publicity Director) 251-9334

For sale

White insulating styrofoam pieces good for scenery, very reasonable prices. Contact Darrel Gilkes at (403) 280-7332

BOARD of DIRECTORS - Positions and Responsibilities

Phone Numbers H - Home B - Business F - Fax

President - Marshall Ouellet
Independant 289-4430
E-Mail bakouel@telusplanet.net

Vice President - Rob Mills
Independant 936-2093
E-Mail rsfills@ccna.ab.ca

Treasurer - Don McLeod
Bow Valley 284-1498

Secretary - Byron Ellett
C.M.T. 251-4027

Special Events - Bob Ellison
Cantrak 279-4563

Special Events - Peter Moon
Cal-O-Rail 288-3754
E-Mail moonpr@cadvision.com

Membership - Rick McFee
Thu. Night Group 289-7770

Publicity/Orderboard - Barry Conn
Independant 251-9334
E-Mail barry.conn@home.com

General Events - Tim Watkins
Independant 236-3359

*Individual Directors have separate responsibilities.
Please contact the appropriate Director for
information on the Area you want to know about.*

For Commercial Advertisers, please contact the
Publicity/Orderboard Director for rates and approval prior to submitting Ads to the Editor.

Upcoming Events

There is a special full page listing of coming events in this issue.

Classified Advertising

Do you have some model railroad related items you would like to sell. If so, consider putting an ad in the Order Board. Ads will be free for members (assuming they are small and don't take more than a few inches of space).

Commercial ads (business card size) are also accepted for a setup fee of \$10.00. A good selection of Computer Clip Art (Railroad Related) is available to spice up your Ad.

E-Mail willie.smith@home.com

The Order Board